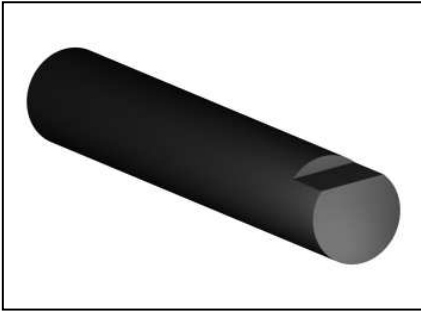




### Assembly of Steel Drive Shaft

The silver steel shaft requires a small flat area to be created on each end where the horned ball part of the universal joint assembly is fitted.

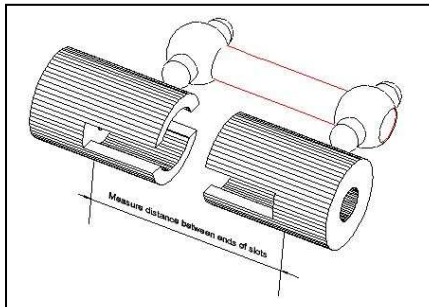
The horned ball has a corresponding flat moulded into it to help with positive engagement of the shaft



The flat area on the end of the shaft need only be 2mm or 1/10" long and is best created using a carborundum cut-off disc in a Dremel tool. It can also be made using a file.

A small amount of Loctite 601, 609 or 638 should be applied to the shaft to ensure it stays in place. The cup part of the universal joint does not have flat section, but we do recommend using a small amount of Loctite to fasten it to the shaft.

### Measuring Length of Shaft



Measure distance between inside ends of the universal joint cup slots, then deduct 0.2mm to obtain ideal length of shaft.

Hollywood Foundry

<http://www.hollywoodfoundry.com>

+61 3 5629 1100

### WARNING:

**THIS PRODUCT IS NOT A TOY. IT IS NOT TO BE SOLD TO OR USED BY CHILDREN UNDER 15 YEARS OF AGE. SOME SMALL PARTS PRESENT A CHOKING HAZARD.**